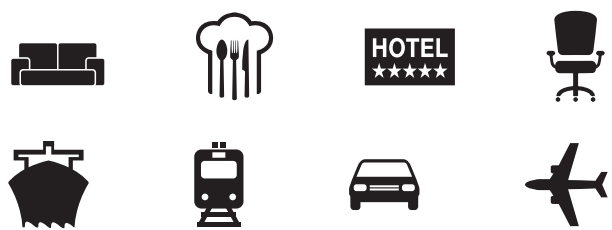


Resistencia a agentes de lavado Resistance against washing agents	Hipoclorito Sódico (lejía) diluido en agua al 5-10% Sodium Hypochlorite (bleach) diluted in water at 5-10%	Jabón neutro diluido en agua hasta generar espuma razonable. % según marca Neutral soap diluted in water until the generation of reasonable foam. % varies according to the brand	Alcohol Isopropílico o Etilico diluido en agua al 20% Isopropyl or Ethyl Alcohol diluted in water at 20%.	Agua Oxigenada (Peróxido de Hidrógeno) diluido en agua al 20% Oxygenated Water (Hydrogen peroxide) diluted in water at 20%
●●● Alta - High ●● Media - Medium ● Baja - Low				
Panam	●●●	●●	●●●	●●
Rattan	●●●	●●	●●●	●●
Basket	●●●	●●	●●●	●●
Boucle	●●●	●●	●●●	●●

### Aplicaciones - Uses

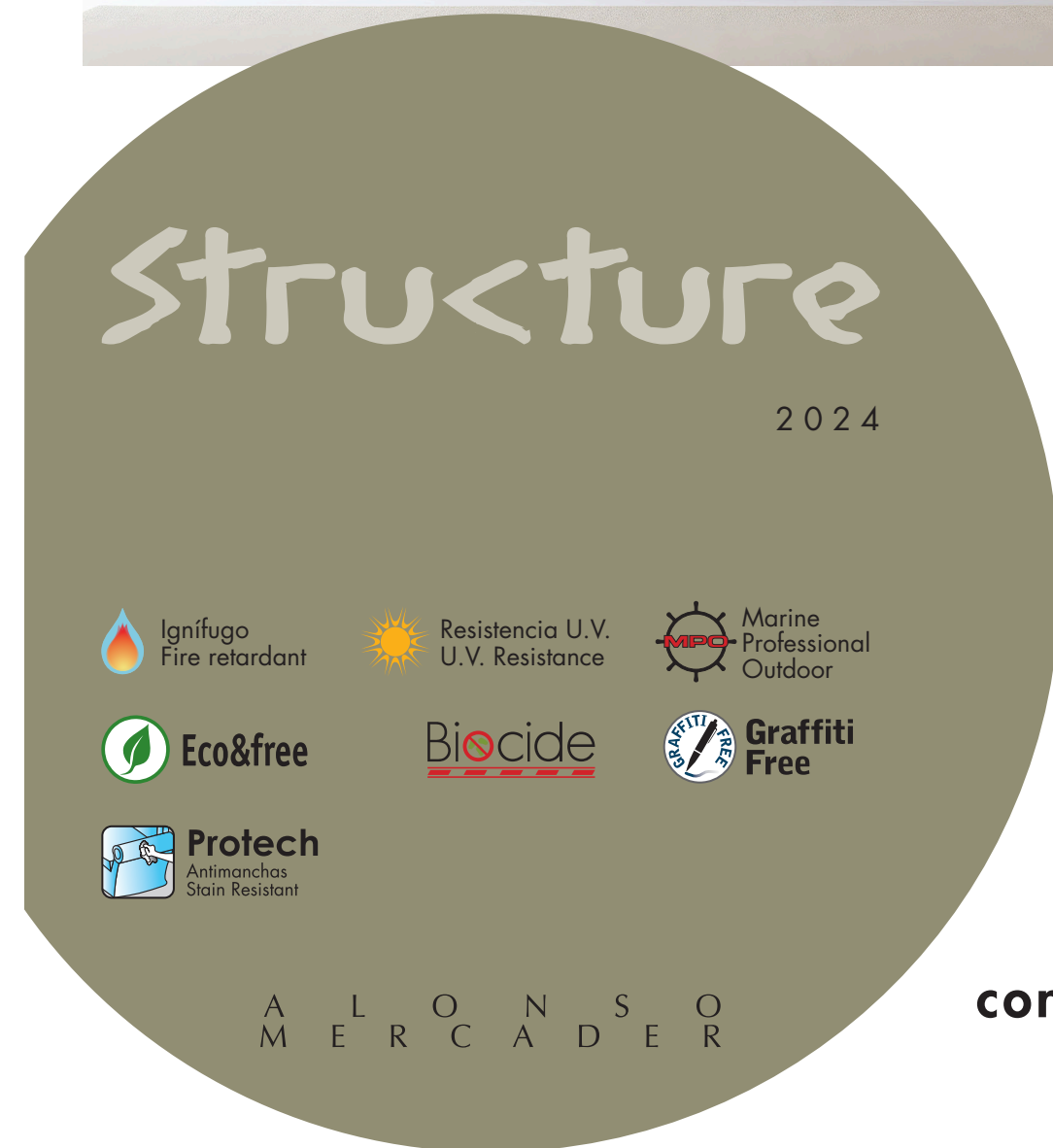


### Mantenimiento y limpieza - Care and cleaning



Limpiar las manchas con jabón neutro y agua.  
Dejar secar al aire. Para secado rápido, usar un secador a temperatura media.  
Para limpiar manchas persistentes, como tinta y rotuladores, utilizar un disolvente suave y diluido.  
Se puede limpiar en seco con los métodos y productos convencionales.  
Productos que se deben evitar: disolventes con cloro o alcohol, aerosoles o limpiacristales, betunes y ceras, y cualquier producto con contenido químico.  
No se recomiendan las toallitas de bebé o las desmaquillantes, ya que eliminan la capa protectora que envuelve a este material y reducen su brillo.

Clean the stains with neutral PH soap and water.  
Dry at room temperature. For faster drying, use a hair drier at mid power.  
In order to clean persistent stains such as ink or pen, use a solvent diluted in water.  
Can be dry cleaned with conventional methods and products.  
Cleaning products to avoid: solvents with chlorine or alcohol, aerosols or window cleaners, wax or show polishers and any other chemical product.  
Do not use clean wipes or make-up cleaners as they will take off the protective layer of the product and reduce its shine.



A L O N S O  
M E R C A D E R

**contract line**  
INDOOR & OUTDOOR

	Panam	Rattan	Basket	Boucle
Composición superficie - surface Composition soporte - backing	100% Vinilo - Vinyl 100% Poliéster - Polyester	100% Vinilo - Vinyl 100% Poliéster - Polyester	100% Vinilo - Vinyl 100% Poliéster - Polyester	100% Vinilo - Vinyl 100% Poliéster - Polyester
Peso - Weight	830 g/m <sup>2</sup>	850 g/m <sup>2</sup>	800 g/m <sup>2</sup>	750 g/m <sup>2</sup>
Ancho - Width	140 cm ± 2%	140 cm ± 2%	140 cm ± 2%	140 cm ± 2%
Tratamiento ignifugo Fire Retardant	UNE 1021 part 1 and 2 BS 5852 part 1 (Cigarette & Match) IMO MSC.307(88) ANNEX 1 part 8 MED Module B+D NFP 92 503 M2 DIN 4102 B2 OPTIONAL: BS 5852 part 1 ignition Source 5 NFP 92 503 (M1) UNI 9175 CLASSE 1M - FAR 25/853	UNE 1021 part 1 and 2 AM 18 M2 BS 5852 Cigarette & Match IMO MSC.307(88) ANNEX 1 part 8 MED Module B+D	UNE 1021 part 1 and 2 AM 18 M2 BS 5852 Cigarette & Match IMO MSC.307(88) ANNEX 1 part 8 MED Module B+D	UNE 1021 part 1 and 2 AM 18 M2 BS 5852 Cigarette & Match

**Eco&free** STRUCTURE cumple la norma Reach Standard. Está libre de ftalatos.  
STRUCTURE meets Reach Standard. Is free phthalates.

**Graffiti Free** Tratamiento basado en siliconas, que protege la superficie de todo tipo de manchas, incluso las de bolígrafo y facilita su desaparición únicamente con el paso de un paño húmedo jabonoso.  
Treatment based on silicones, which protects the surface from all types of stains, including those of pen and facilitates its disappearance only with the passage of a damp soapy cloth.

**Biocide** Tratamiento bactericida basado en sulfatos no bioacumulables y de baja toxicidad.  
Bactericidal treatment based on non-bioaccumulative sulfates and low toxicity.

La migración de pigmentos, tinturas y colorantes como los utilizados en el denim de algunos tejanos es un efecto irreversible en esta tipología de productos, por lo que Alonso Mercader no puede asumir responsabilidad alguna en las manchas ocasionadas.  
The migration of pigments, dyes and colorants like the ones used in some denim jeans is an irreversible effect on this type of products, therefore Alonso Mercader cannot assume any responsibility for caused stains.

Alonso Mercader persigue constantemente mejorar las especificaciones, el diseño y la producción de sus tejidos, no debiéndose considerar este catálogo guía infalible de las especificaciones actuales.  
Alonso Mercader continuously try to improve the design and production. Should not consider this catalogue a guaranteed guide of current specifications.

Este catálogo anula el anterior - This catalogue cancels the previous one

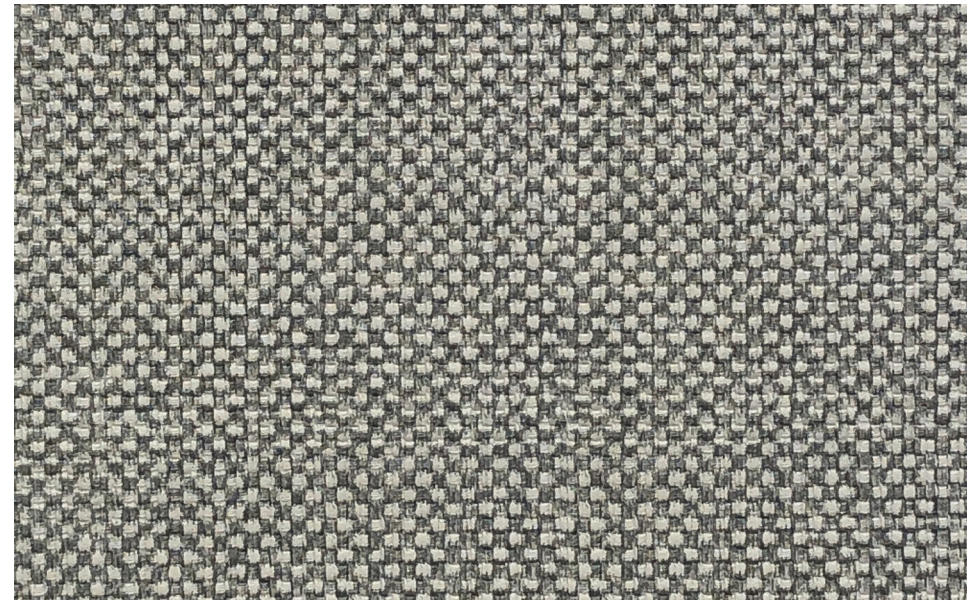
Disponemos de Fichas Técnicas completas de cada producto a su disposición.  
We have complete Technical Sheets of each product at your disposal.



**Garantía 5 años. Términos y condiciones: Por favor, visite nuestra web.**  
**Warranty 5 years. Terms and conditions apply: Please visit our website.**

A L O N S O  
M E R C A D E R  
Eduard Calvet i Pintó, 22. Poligono industrial Vallmorena. 08339 Vilassar de Dalt. Barcelona (Spain)  
tel. (+34) 93 753 83 75 fax (+34) 93 753 82 46  
comercial@alonsomercader.com www.alonsomercader.com

# PANAM



white 100



cloud 171



cream 102

graphite 175



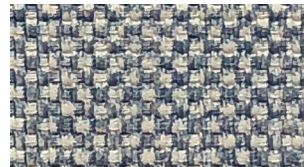
ivory 105



sky 170



lead 172



storm 166



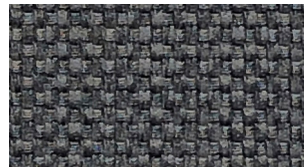
wood 120



carob 123



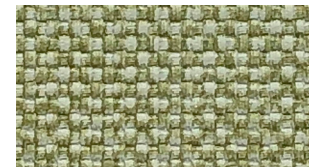
anthracite 177



fosco 185



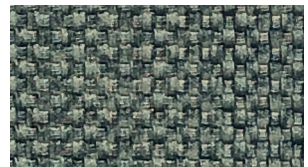
sould 144



moss 142



turquoise 145



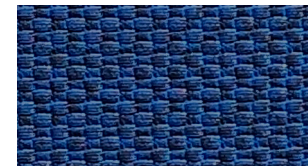
forest 147



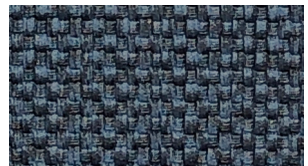
blue 165



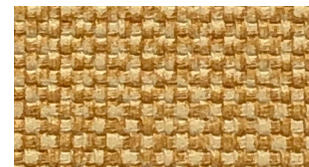
sea 167



azure 164



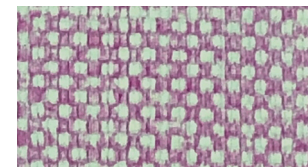
navy 169



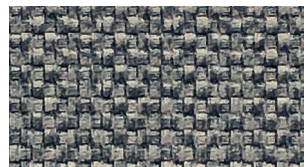
ocre 125



rose 128



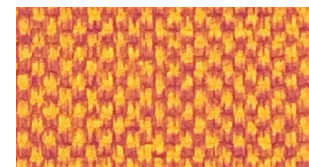
lavande 163



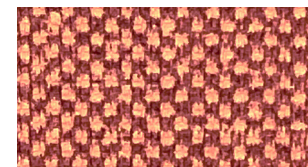
spruce 168



mandarine 117



tangerine 126

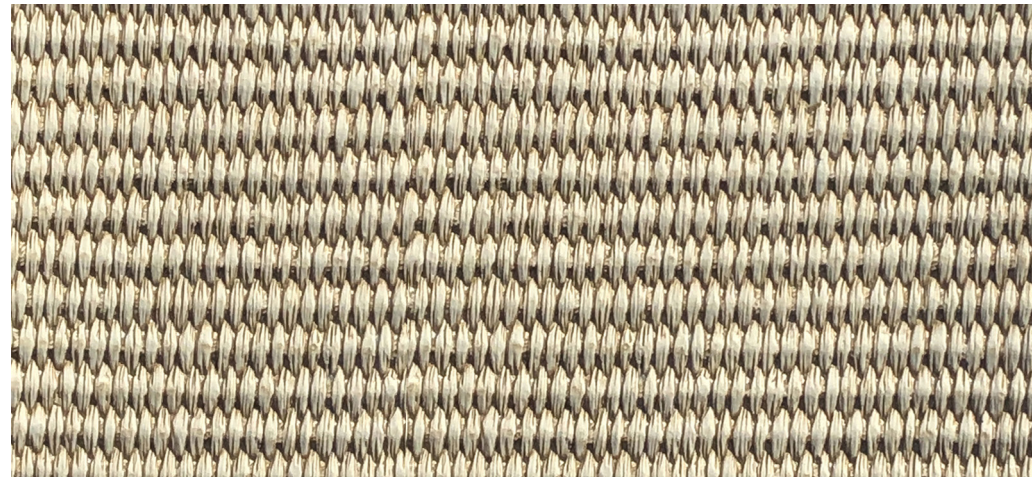


fawny 114



red 127

# BASKET



cloud 701



stone 707



ocre 725



bone 705



wood 720



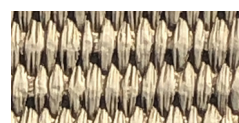
hazelnut 715



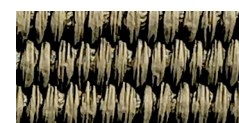
caramel 724



cinnamon 721



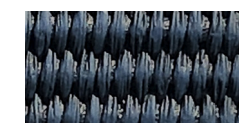
taupe 777



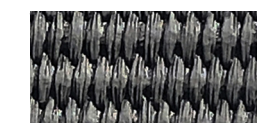
salvia 740



sea 767



navy 769



charcoal 785

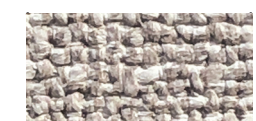
# BOUCLE



snow 900



cream 902



ivory 905



granite 971



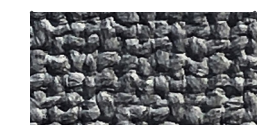
stone 975



leal 972



sky 970



anthracite 977



wood 920



carob 923



caramel 924

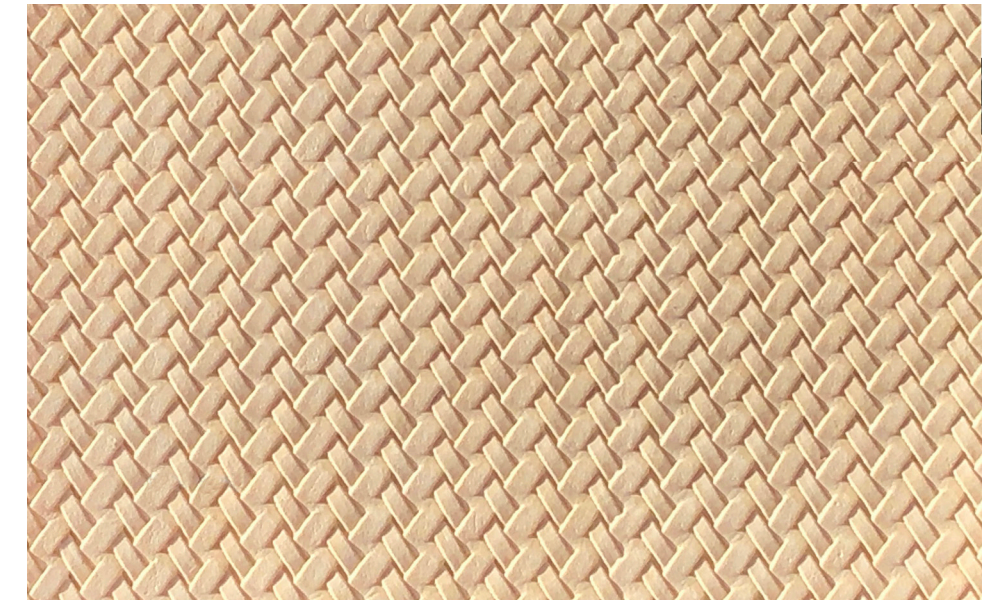


navy 969



sea 967

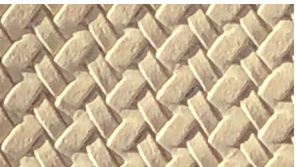
# RATTAN



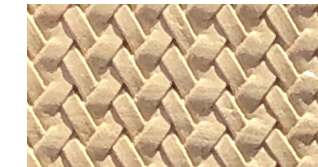
cream 302



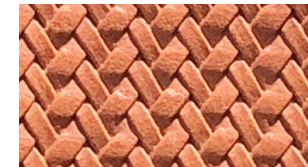
bone 305



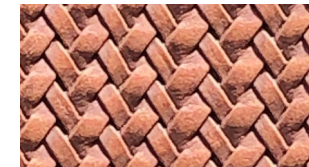
beige 304



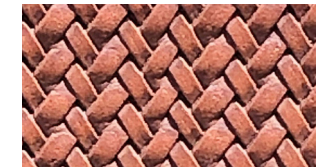
taupe 377



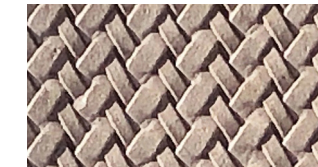
hazelnut 315



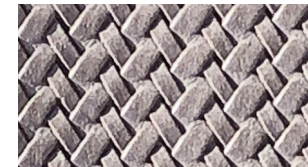
caramel 324



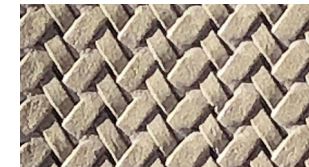
cinnamon 321



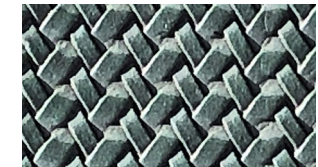
seawood 349



anthracite 370



salvia 340



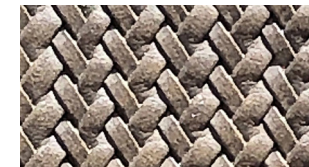
green 347



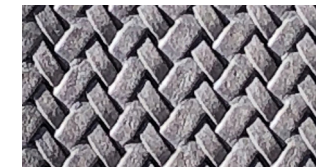
carro 320



brown 323



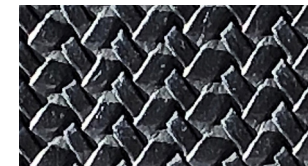
titan 386



charcoal 385



navy 369



black 390

